

# SpecToolV2 MBox Manual

1.0.0.1



## 1. Display Menu

1.1 - Navigating the menu

1.2 - Menu tabs

## 2. Description of the inputs and outputs

2.1 - Top

2.2 - Left Side

2.3 - Right Side

## 3. Internal Mbox Memory

## 1. Display Menu

### 1.1 Navigating the menu



- Go down... press for 1 second „Menu Button”





- Opening a tab... press for 4 second „Menu Button”



- Return to the menu... press for 5 second „Menu Button”



- Return to the menu from the discription tab, only through the "Return" option





- Return to the menu... press for 3 second „Menu Button“



## 1.2 Menu tabs

### 1. Multimeter

- Voltmeter and ampmeter



### 2. Discription

- Colors out CAN





- Examples of module communication, according to can colors



### 3.Serial Number



- Serial number for the device





## 4.Support



- Our email for technical support



## 5.Upgrade



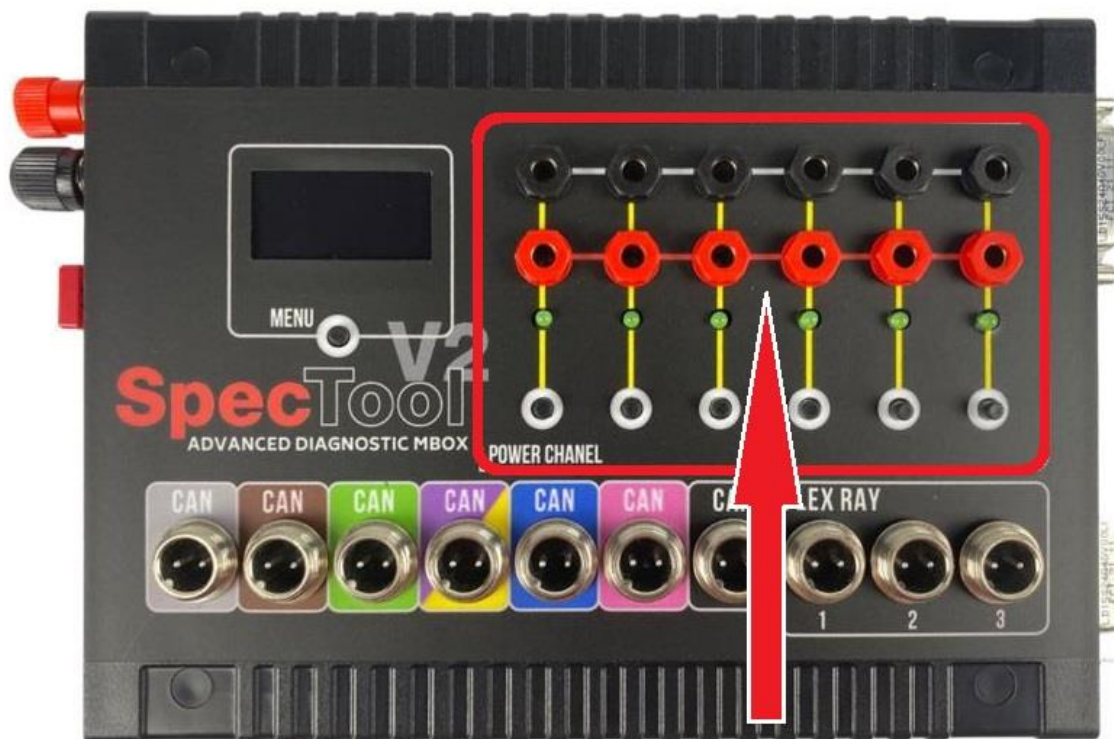
-MBox device update



## 2. Description of the inputs and outputs

### 2.1 – Top

- 6xPower Chanel OUT 12V controlled by buttons



- 7 Can Outputs and 3 Flex Outputs
- Grey CAN
- Brown CAN
- Green CAN
- Violet / Yellow CAN
- Blue CAN
- Pink CAN
- Black CAN
- Flex Ray 1
- Flex Ray 2
- Flex Ray 3



## 2.2 – Left Side

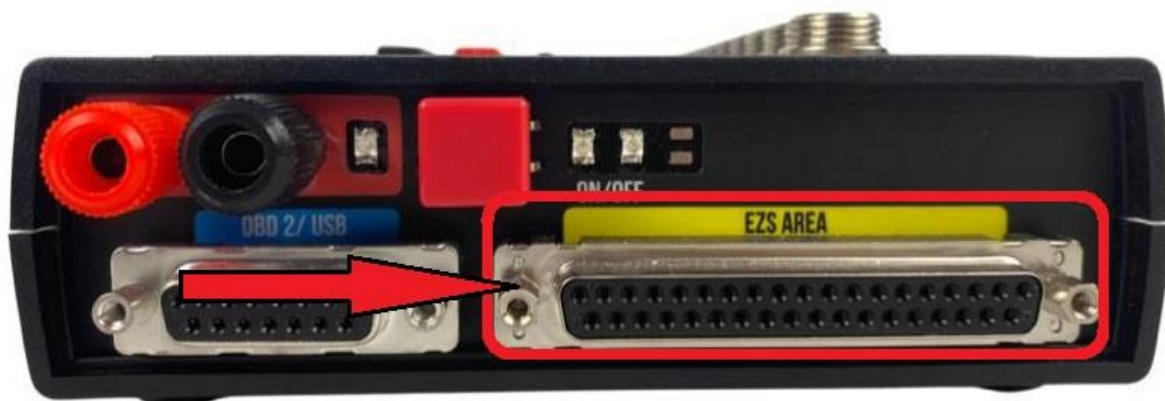
- 12V IN - 10A power adapter recommended
- Red power switch ON/OFF



- OBD2 / USB Port

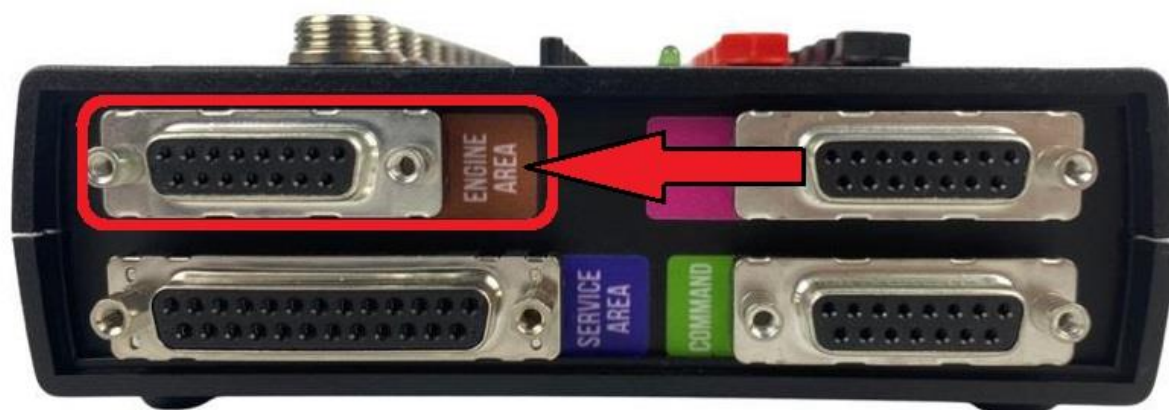


- EZS Area Port

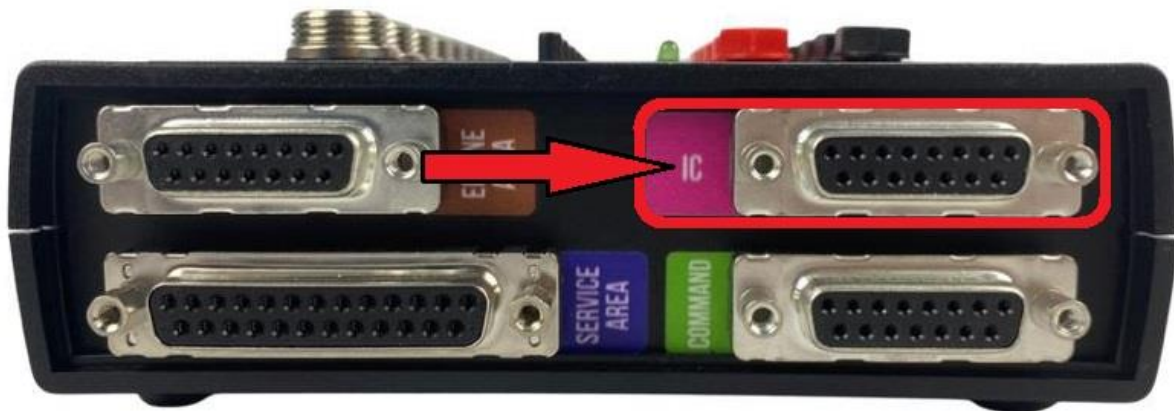


2.3 – Right Side

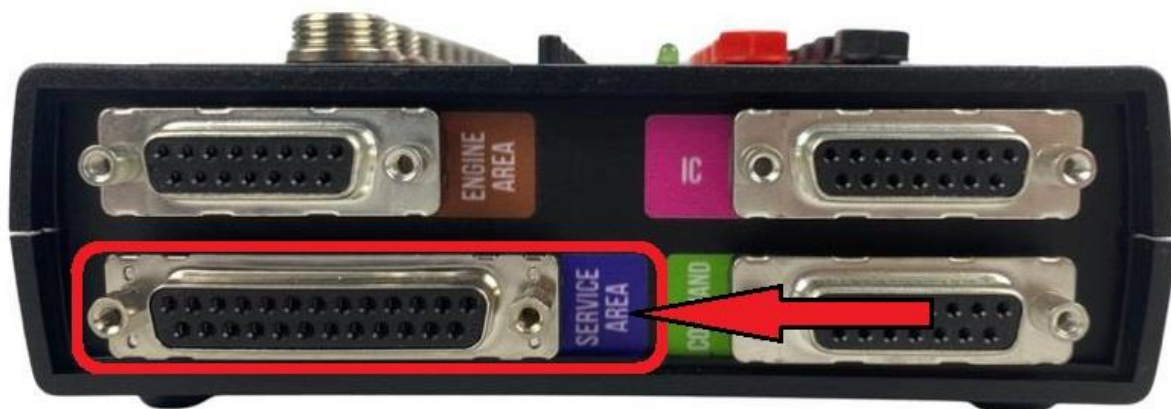
- Engine Area Port



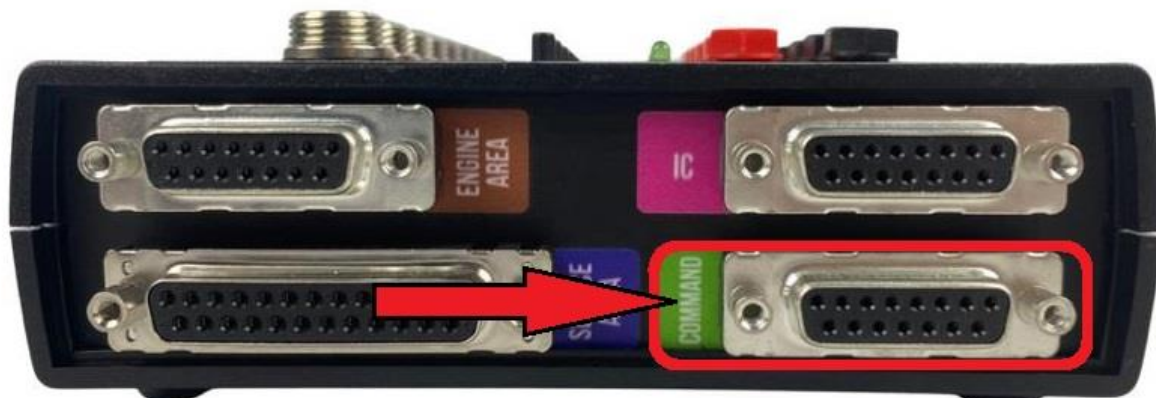
- IC Port (Instrument Cluster)



- Service Area Port



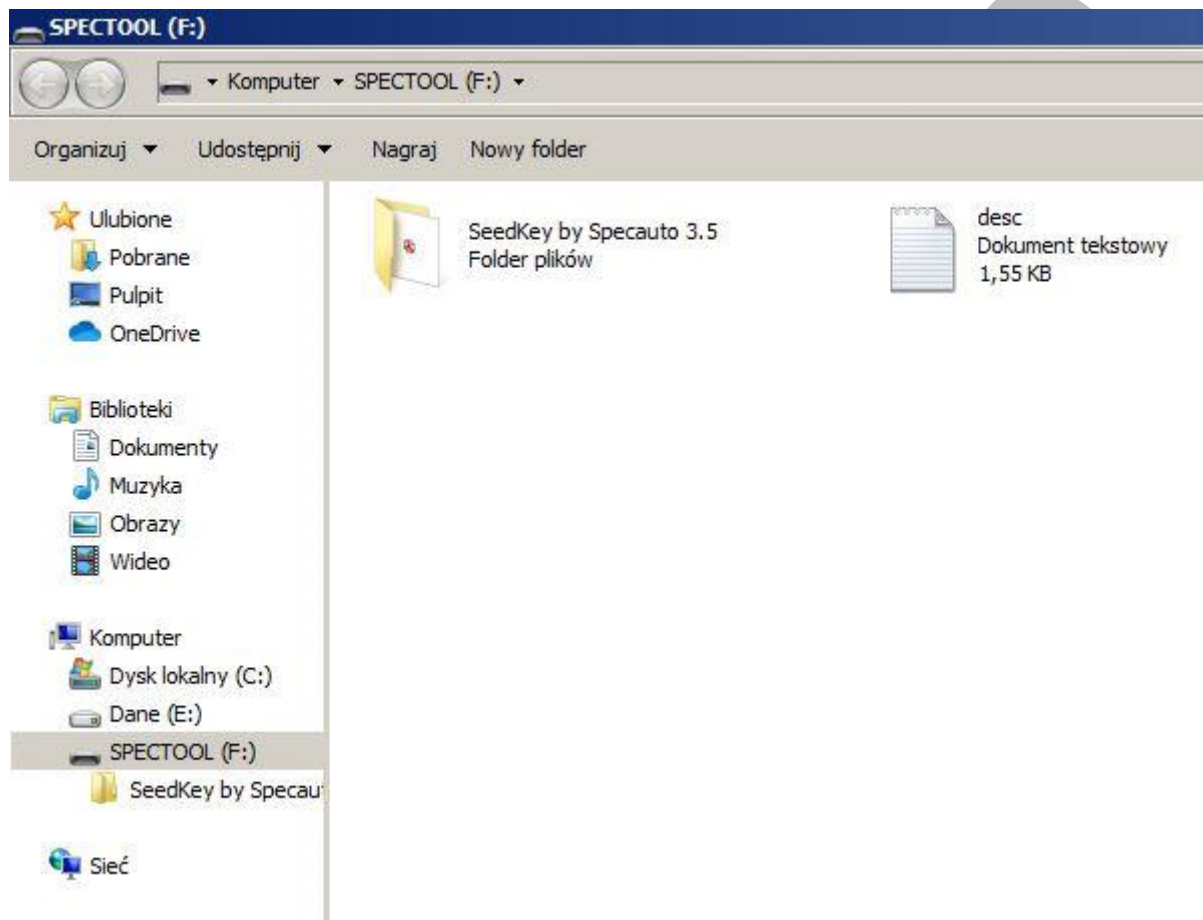
- Command Port (Head Unit)



### 3. Internal Mbox Memory

- The Mbox has a built-in 512Mb memory

IMPORTANT - first, connect the MBox to 12V and turn on the power with the red buton , then connect the USB cable to PC



- SeedKey Calculator 3.5

- desc.TXT – is an important file used in the description tab (do not delete!)