

SpecToolV2

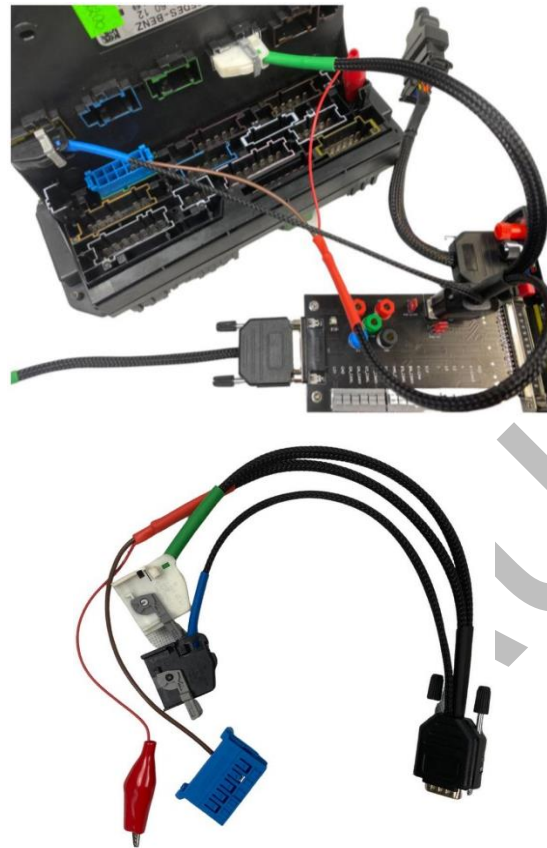
Connection FBS3 Generation with FBS3 PCB Adapter



v.1.6

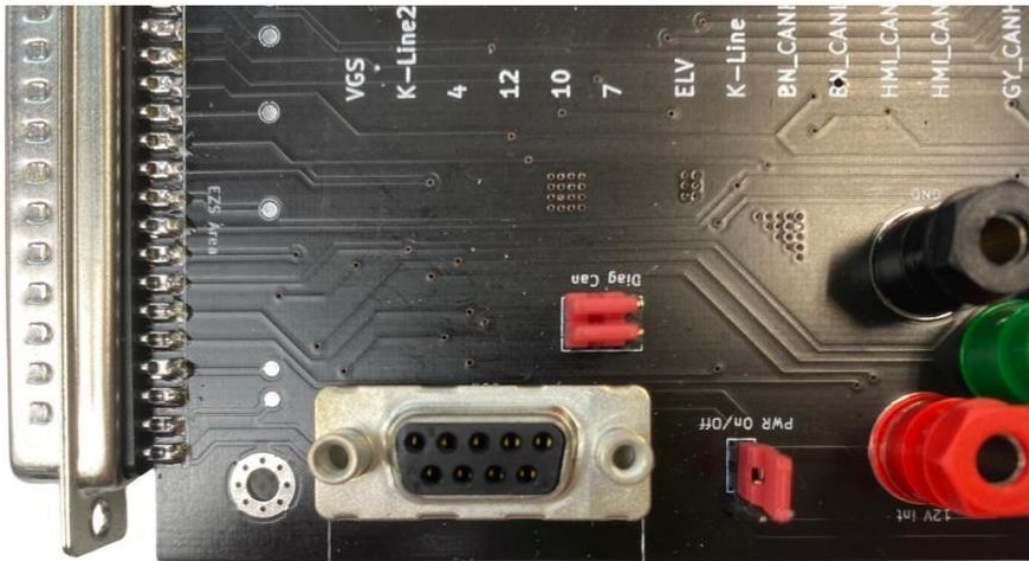
1. CGW W204 W212 Connection Cable
2. Dsub9 Pinout
3. Dsub15 Pinout
4. Connection with Instrument Cluster
5. EZS W212 W218 - 2 plugs
6. EZS W246 W166 W447 - 1 , 2 plugs
7. ZGW 211 Connection Cable
8. EZS W164 W221 Before Lift
9. EZS W906 Connection
10. ELV W906 W211 W203 5 pin plug

1. CGW W204 W212 Connection Cable



D-Sub 9	Plug 19L (20 pin)	Plug 22L (20 pin)	Plug 15M (10pin)	Red Crocodile
1	-	-	-	S8
2	-	10	-	-
3	3	-	-	-
4	-	-	-	-
5	7	-	-	-
6	-	9	-	-
7	1	-	-	-
8	-	-	-	-
9	6	-	-	-
Top GND	-	-	7	-

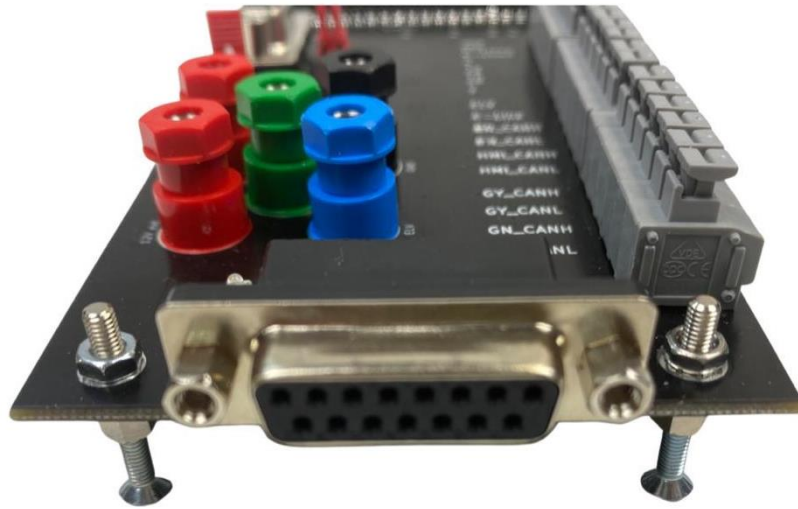
2. Dsub9 Pinout



- Pinout Cabel

D-Sub 9	
1	12V
2	Brown CAN L
3	Green CAN L
4	-
5	Gray CAN L
6	Brown CAN H
7	Green CAN H
8	-
9	Gray CCAN H
Top GND	-

3.Dsub15 Pinout



D-Sub 15	
1	12V
2	Green CAN L
3	Gray CAN L
4	HMI CAN L
5	Brown CAN L
6	K-LINE
7	VGS
8	Conn8
9	GND
10	Green CAN H
11	Gray CAN H
12	HMI CAN H
13	Brown CAN H
14	ELV
15	K-LINE2

4.Connection with Instrument Cluster -OLD/W205 IC CABEL



+



-Bridge Green CAN to HMI CAN

5.EZS W212 W218 PINOUT



Option Connect to



Or CABEL Dsub15



D-Sub	Green 10pin	Blue 8pin
1	-	7 - 12V
2	1 - Green CAN L	-
5	4 - Brown CAN L	-
9	10 - GND	-
10	2 - Green CAN H	-
13	3 - Brown CAN H	-

6.W246 W166 W447 EZS 1 and 2 plug



D-Sub	Green 12pin	Blue 8pin
1	7 - 12V	7 - 12V
2	1 - Green CAN L	-
3	9 - Gray CAN L	-
4	12 - HMI CAN L	-
5	4 - Brown CAN L	-
6	-	-
7	-	-
8	-	-
9	11 - GND	-
10	2 - Green CAN H	-
11	10 - Gray CAN H	-
12	6 - HMI CAN H	-
13	3 - Brown CAN H	-
14	5 - ELV	-
15	-	-

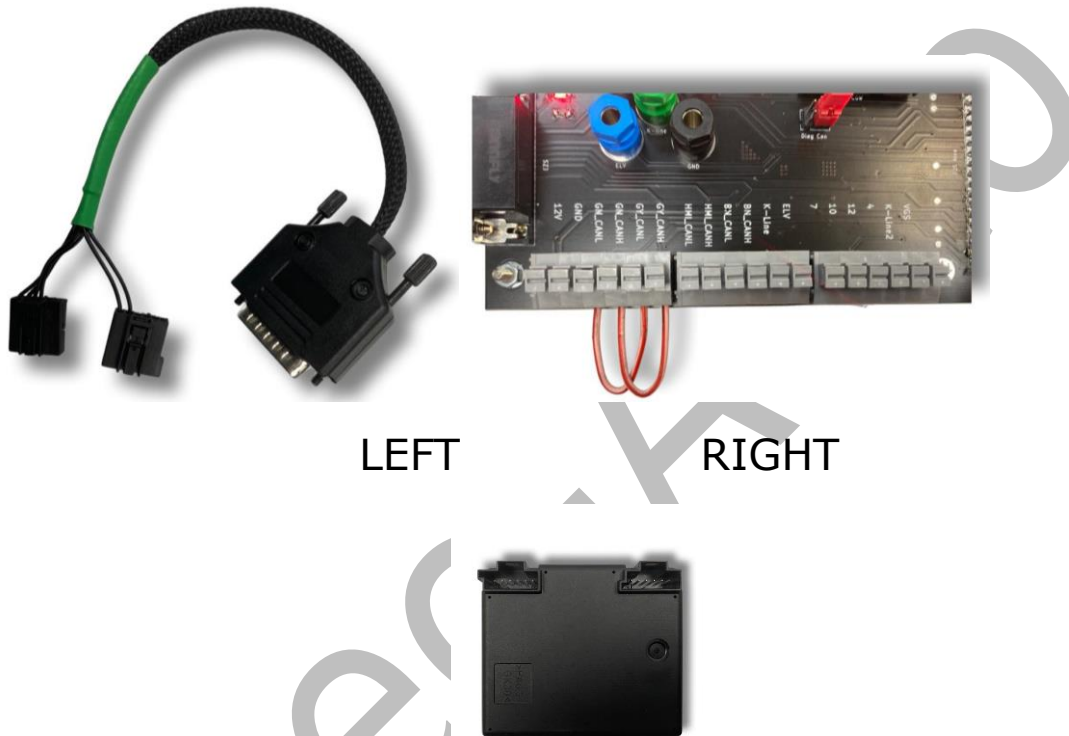
7. ZGW W211 / W172 Connection Cable



D-Sub	Black 10pin	
1	6 - 12V	-
2	9 - Brown CAN L	-
3	7 - Green CAN L	-
4	-	-
5	4 - Gray CAN L	-
6	10 - Brown CAN H	-
7	8 - Green CAN H	
8	-	
9	5 - Gray CAN H	
TOP	1 - GND	

8. EZS W164 W221 Before Lift

Bridge CAN Gray to CAN Green and use ZGW211



D-Sub	LEFT 6PIN	RIGHT 6PIN
1	6 - 12V	-
2	-	6
5	-	3
6	-	4
9	5 - GND	-
10	-	5

9.EZS W906 Connection



-Bridge Green CAN to HMI CAN

D-Sub	C Black 8pin	D White 8 pin	B Black 5 Pin
1	-	8 - 12V	1,2 - 12V
2	-	4 - Green CAN L	-
3	2 - Gray CAN L	-	-
5	-	2 - Brown CAN L	-
9	-	7 - GND	-
10	-	3 - Green CAN H	-
11	1 - Gray CAN H	-	-
13	-	1 - Brown CAN H	-
14	-	-	5 - ELV

10.ELV W906 W211 W203 5 Pin PLUG



ELV	
1	ELV
2	12V
3	GND
4	12V